



**TAIWAN
EXCELLENCE**

SMART LINKS MANUFACTURING EXPO 2018

BANGKOK INTERNATIONAL TRADE & EXHIBITION CENTRE (BITEC)

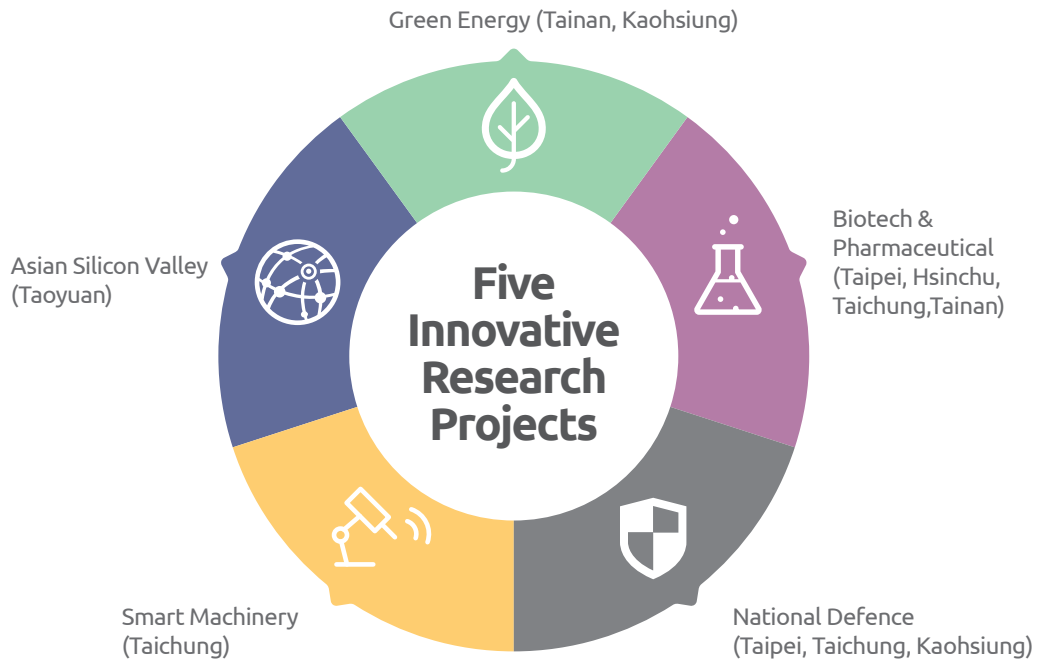
8M49, HALL 98

JUNE 20-23, 2018



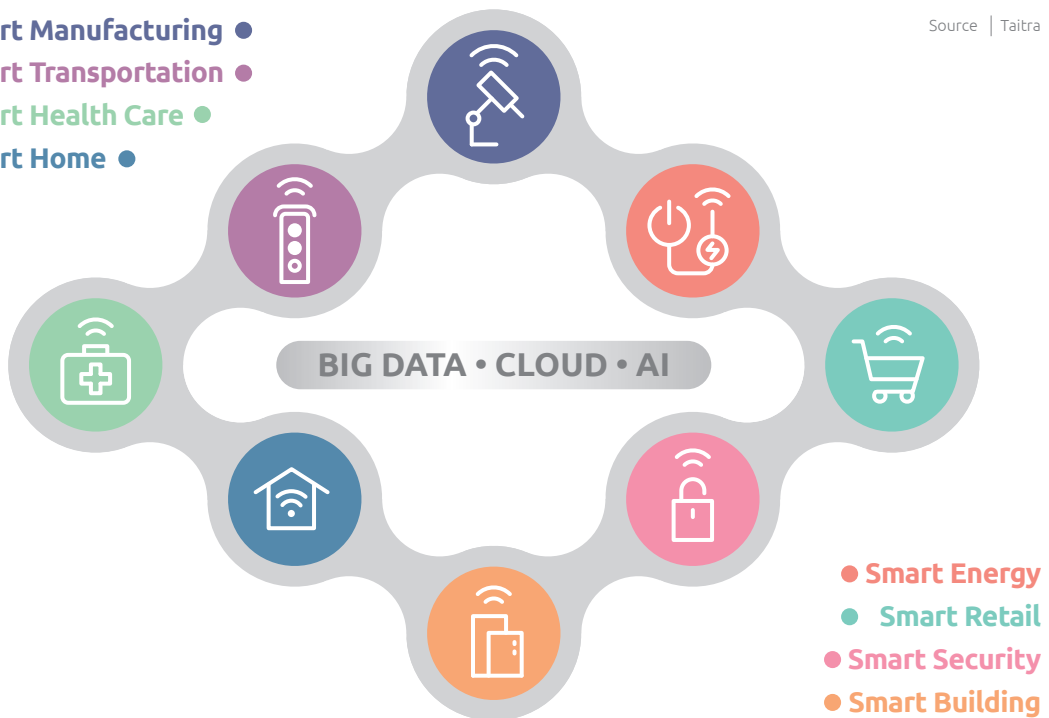
Economic and Trade Policies

Source | National Development Council



Smart Manufacturing ●
Smart Transportation ●
Smart Health Care ●
Smart Home ●

Source | Taitra



Economic Statistics

Source | Ministry of Finance, WTO, IMF, National Statistics



PPP

(Purchasing Power Parity)

US \$49,901

• Ranked 20th



GDP

(Gross domestic product)

US \$571 billion

• Ranked 22nd



GDP Per Capita

US \$24,227



**Economic
Growth Rate**

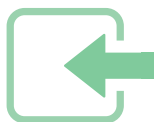
2.58% (2017)



Total Exports Value

US \$317 billion

• Ranked 18th



Total Imports Value

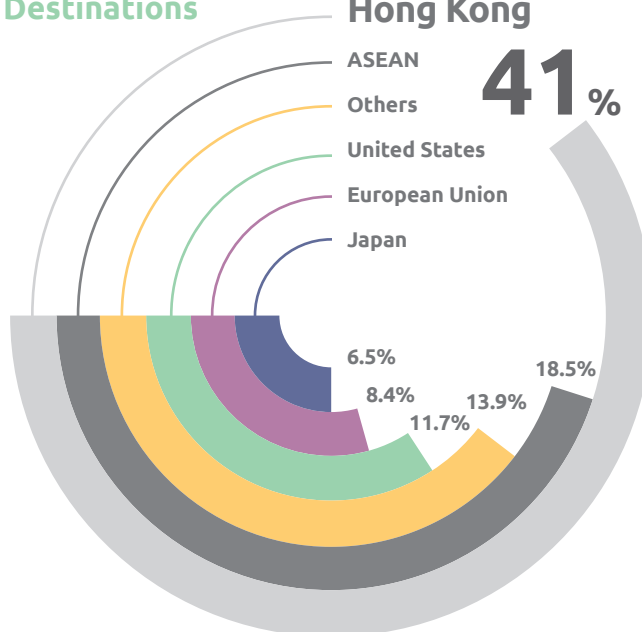
US \$259 billion

• Ranked 18th

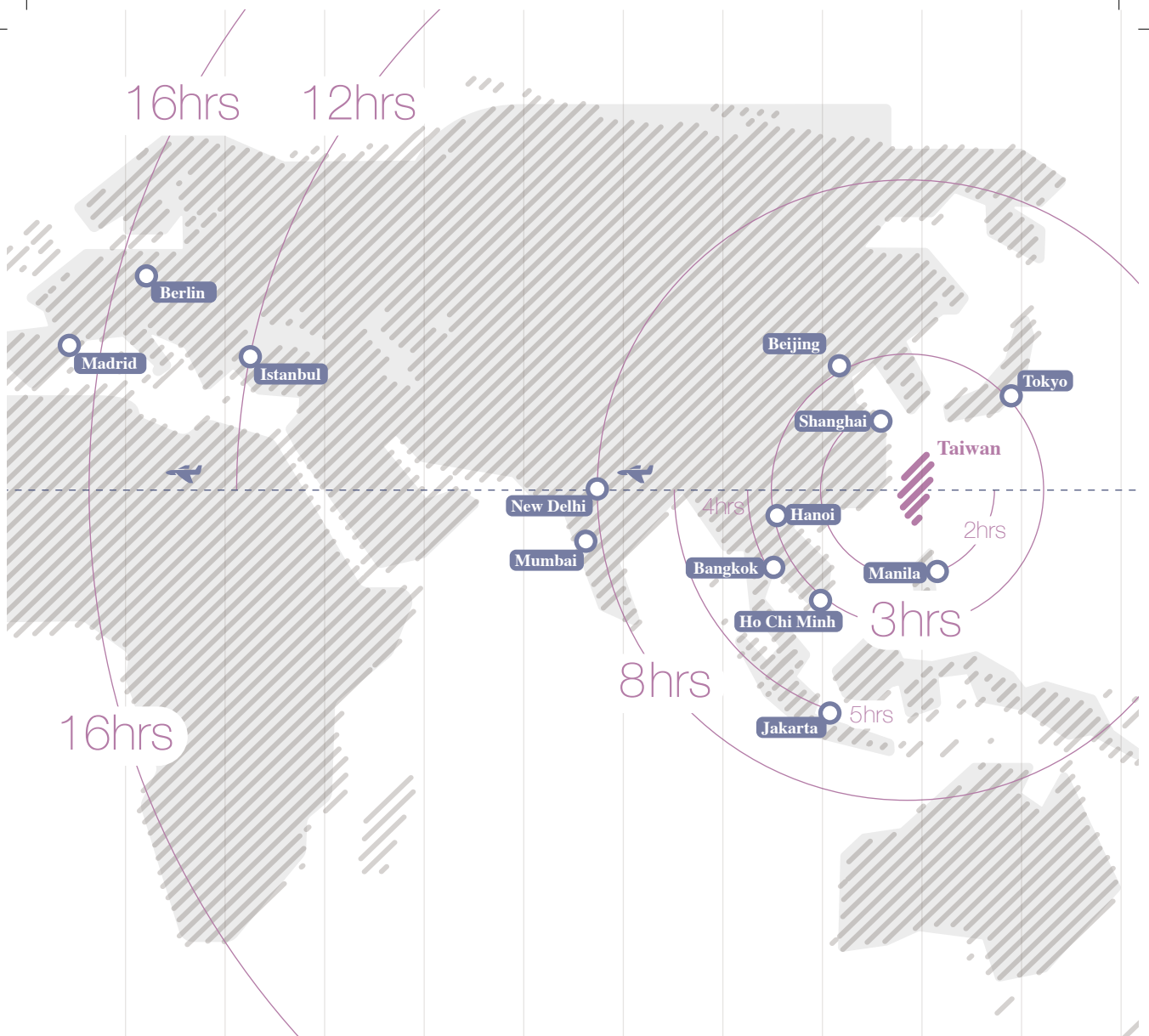
Primary Exports Destinations

China and Hong Kong

41%



Source | Ministry of Finance, WTO



About Taiwan



■ Area

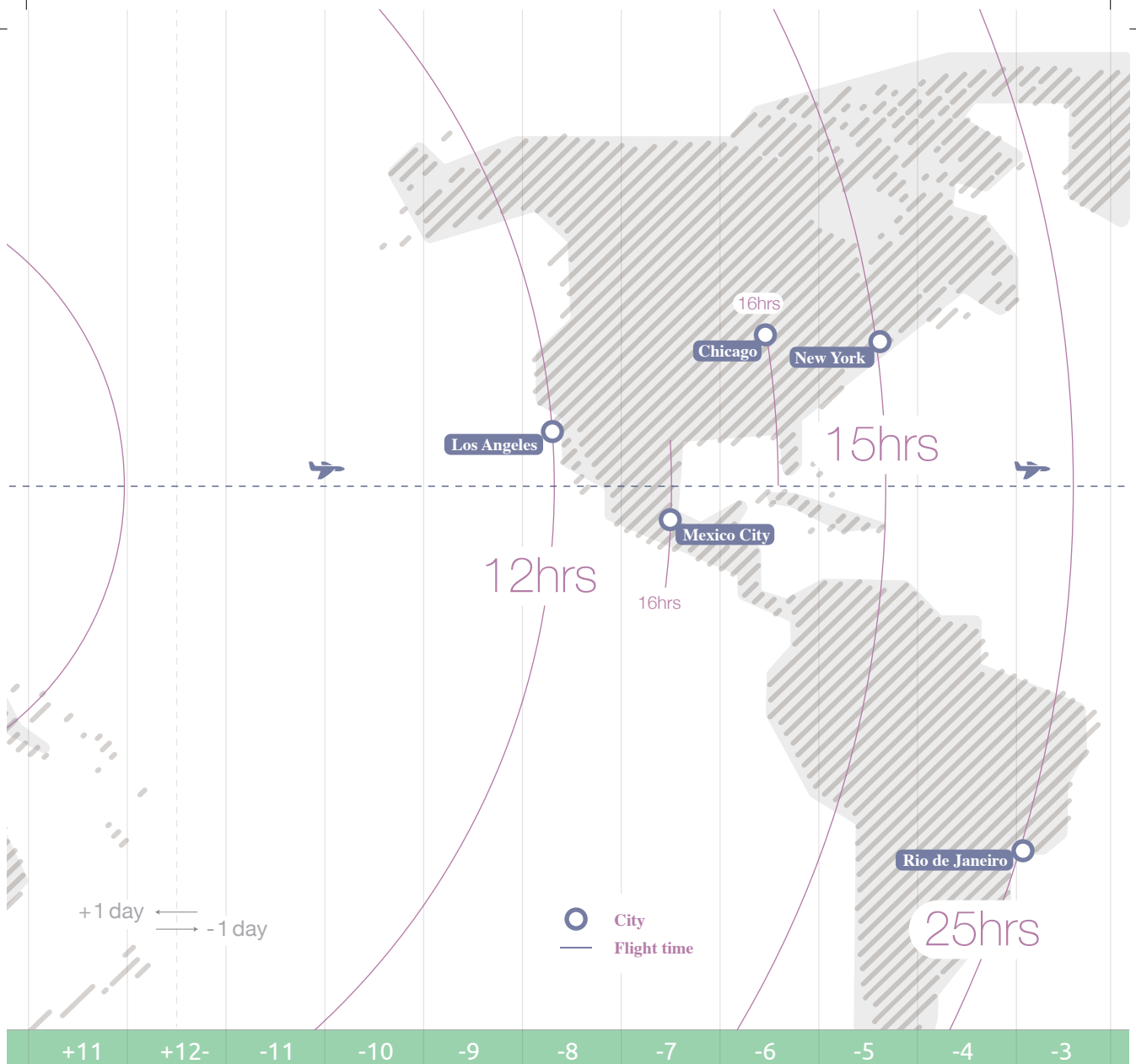
36,197 km²

(13975.74 mi²)
Ranked 139th

■ Population

23.57 million

Ranked 56th



Landmark

Taipei 101

Located in Northern Taiwan, the 8th tallest building in the world.

Climate

- Tropics
- Subtropics

23.5°N

Ethnicity

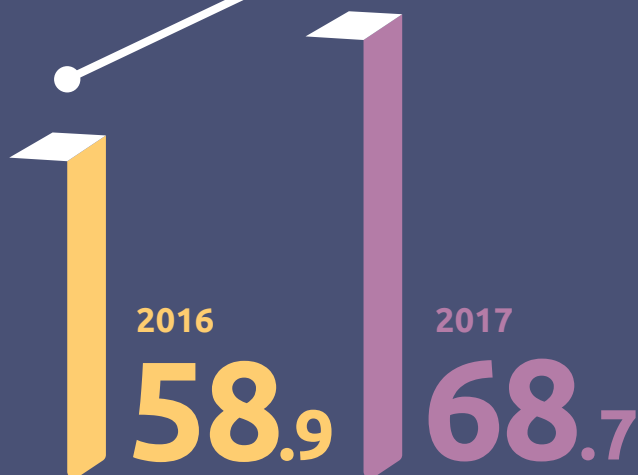
- Han Chinese / Hakka / Hoklo
- Indigenous People
- New Immigrants

Trade Value of Taiwan

New Southbound Markets

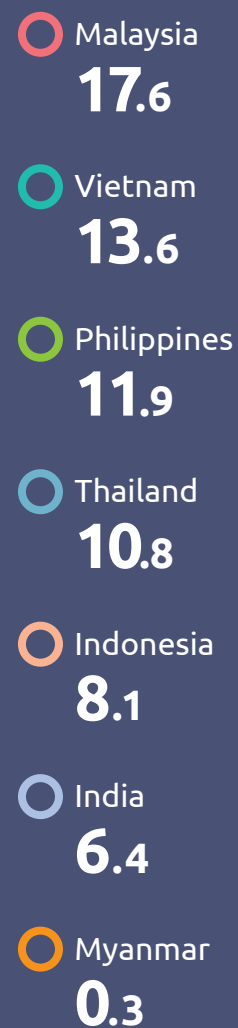
Trade
Growth Rate

17%



Trade Values between
Taiwan and 7 Main New
Southbound Markets

Unit : US billion

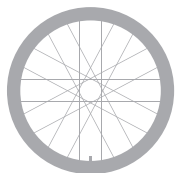


Industrial Development

Leading Industries

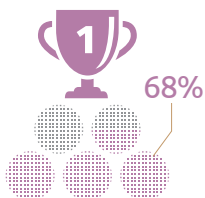
Bicycles

Holds the largest import share in Germany, Netherlands and UK.



IC Foundry

Taiwan's IC Foundries hold the largest market share in the world.



Super Yachts

The 4th builder country in the world and Asia's biggest maker.



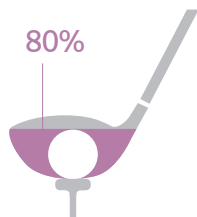
Textile

Functional Textiles hold a 70% market share worldwide



Sports and Leisure

80% of world's golf club heads are produced by Taiwanese companies.



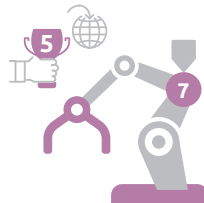
Healthcare

The world's 1st medical power scooter exporting country.



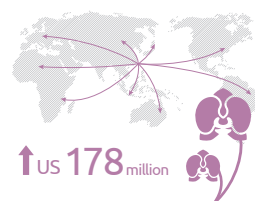
Machine Tool

The world's 5th machine tool exporting country. The 7th machine tool maker in the world.

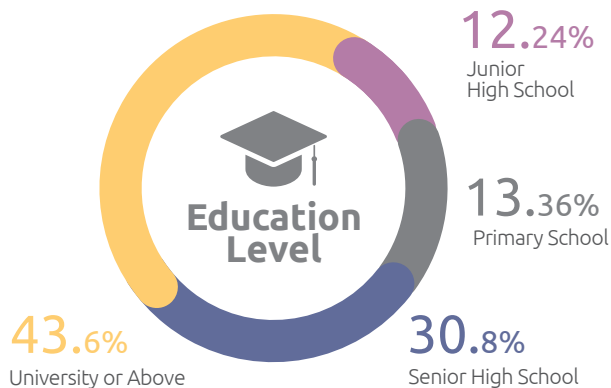


Orchids

Through advanced breeding methods and pattern protection to enhance the competitiveness of the orchid industry. The export amount of the Taiwan orchid reached US\$ 178 million.



Intellectual Advantage



A total of **11** Taiwanese universities have made the world's list for the top **500** universities

500

Industrials Clusters



Sports & Leisure Goods

The export amount of sporting goods sector reached US\$ 1.7 billion in 2016.



Bicycle

The A-Team (a team comprised of 20 bike and parts companies) has created high quality and innovative new products.



Automobile Electronic

The auto electronics industry of Taiwan is founded on the strengths of its well-developed ICT and auto parts industries. In 2016, the auto electronics industry reached an output value of US\$6.3 billion.



ICT

These clusters have helped Taiwan the "go-to" location for procurement and design.



Machine Tool

Taiwan is one of the top exporting countries for machine tools.



Biomedicine

Innovative medical devices and new marketing models that drive the formation of a complete product and service ecosystem.



Orchid

Perfect growing environment, combined with advancements in breeding.



Automobile Parts and Accessories

The auto parts industry has the capability of providing original equipment (OE) and after market (AM) service to global supply chain. A comprehensive, highly efficient subcontractor network makes up a central-to-satellite plant system within which individual parts manufacturers specialize in specific areas.



Green Energy

Development of a complete photovoltaic industrial cluster that encompasses the up, mid, and downstream segments of the supply chain.



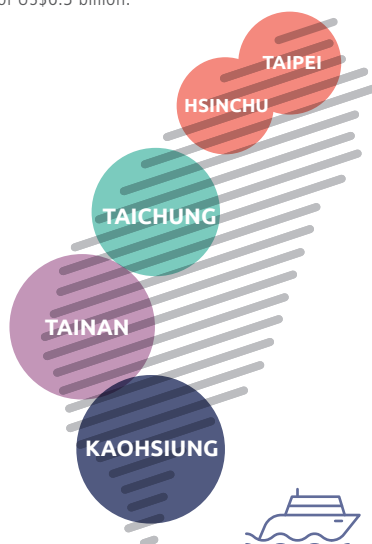
Fastener

Production accounts for 30% of all fasteners internationally and has exported to over 140 countries.



Super Yachts

The success of Taiwan's super yachts rests on three main points: high building skills, superior craftsmanship and customized solutions. Combined with the geographical advantage of Kaohsiung City.



World Rankings

Taiwan is ranked **2nd** in the world in terms of "State of Cluster Development" in The World Economic Forum (WEF)'s **"Global Competitiveness Report 2017-2018"**



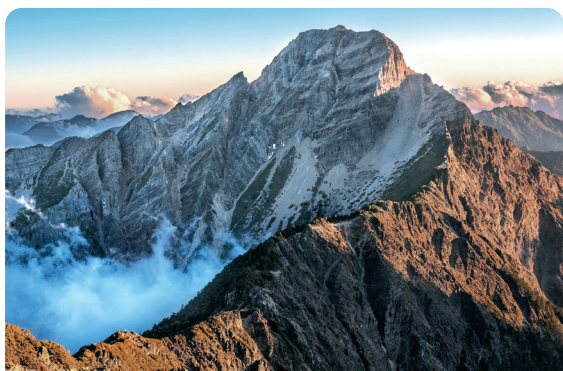
Taiwan is ranked **14th** in the **2017 Annual World Competitiveness Yearbook** and **3rd** in the Asia-Pacific region



Taiwan is ranked **15th** in the **"Doing Business 2018"** survey by the World Bank.

15

📍 Attractions in Taiwan



Yushan National Park

Mt. Jade is the highest peak in East Asia (3952 meters)



Nantou County
Sun Moon Lake



Taichung City
Daja Jenn Lann Temple



Penghu County
Cimei Twin Hearts
Stone Weir



Tainan City
Chihkan Tower



Taipei City
National Palace Museum



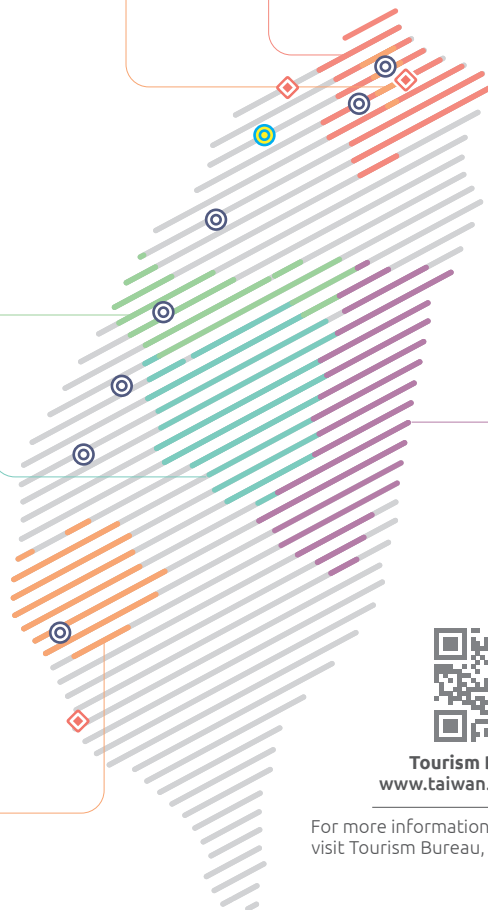
New Taipei City
Jiufen



Hualien County
Taroko National Park

INTERNATIONAL
AIRPORT

HIGH SPEED
RAIL STATION



Tourism Bureau
www.taiwan.net.tw

For more information, please
visit Tourism Bureau, Taiwan



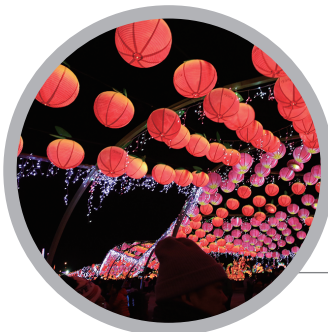
Festivals in Taiwan

January



New Year's Day

February



Taiwan Lantern Festival

March



Taichung City Mazu International Festival

April



The Tung Blossom Festival

June



Dragon Boat Festival

September



Mid-Autumn Festival

December



Winter Solstice Festival

Culture of Taiwan



Lantern Festival

The sky lanterns of the festival carry the prayers and vows of the people. A great event that reflects the festive Taiwanese spirit to the world.



Dragon Boat Festival

An annual tradition that is also one of Taiwan's 3 major holidays. Dragon boat races are held, and people eat Zongzi (Rice Tamales) on Festival day.



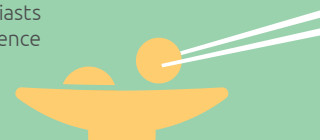
Mid-Autumn Festival

On the Festival day, family members get together, see the full moon and eat moon cakes with pomelos.

Source | Tourism Bureau, Taiwan

Tastes of Taiwan

Taiwan's street cuisine is beloved by food enthusiasts around the world. One of the quickest ways to experience is to visit night markets.



Bubble Tea



Xiaolongbao
(Steam Dumplings)



Shaved Ice Dessert



Braised Pork Rice



Pineapple Cakes



Zongzi
(Rice Tamales)



Ban-wan
(Taiwanese Mega Dumplings)



Oyster Omelet

Main Events and Trade Shows in 2018-2019

Trade Shows in Taiwan

March



Taiwan International Boat Show
3.15 - 3.18

April



TAIPEI AMPA



TaiwanITS



AutoTronics Taipei



MOTORCYCLE TAIWAN

4.11 - 4.14

June



**COMPUTEX
TAIPEI**

6.5 - 6.9



Taiwan Int'l Medical &
Healthcare Exhibition

6.21 - 6.24

October



Taipei international cycle show

10.31-11.03

International Events in Taiwan

2018



World University
Baseball Championship 2018
7.6 - 7.15



IeSF e-Sports World
Championship 2018
November



Taichung World
Flora Exposition 2018
2018.11.3 - 2019.4.24

2019



Young & Green
Taichung East Asian
Youth Games 2019
8.24 - 8.31

World Combat Games 2019

For more details of trade shows, please visit: www.taiwantradeshows.com.tw

Source : National Statistics, Ministry of Finance, Ministry of Economic Affairs, Tourism Bureau, TAITRA, QS World University Rankings

About Us



The symbol of Taiwan Excellence honors Taiwan's most innovative products that provides tremendous value to users worldwide. All products carrying this symbol have been selected for specific Taiwan Excellence Awards based on their excellence in design, quality, marketing, Taiwanese R&D and manufacturing. Initiated by the Ministry of Economic Affairs (MOEA), Taiwan, R.O.C. in 1992, the symbol of Taiwan Excellence is recognized by 102 countries.

Organized by



Bureau of Foreign Trade (BOFT), MOEA

The Bureau of Foreign Trade (BOFT) under the Ministry of Economic Affairs (MOEA), R.O.C. is responsible for implementing policies and regulations governing foreign trade and economic cooperation. Established in January 1969, the BOFT's role and position have been adjusted regularly to meet the needs of the ever changing international economic and trade environments. The BOFT has been guiding and working with the Taiwan External Trade Development Council (TAITRA) in numerous promotional trade projects and activities both internationally and domestically. Having worked closely with TAITRA for many decades, the BOFT continues to commission TAITRA for various critical government projects relating to business, trade and investment, while promoting Taiwan internationally.



Taiwan External Trade Development Council (TAITRA)

Founded in 1970 to help promote foreign trade, the Taiwan External Trade Development Council (TAITRA) is the foremost non-profit, semi-governmental trade promotion organization in Taiwan. Jointly sponsored by the government, industry associations, and several commercial organizations, TAITRA assists Taiwanese businesses and manufacturers with reinforcing their international competitiveness and in coping with the challenges they face in foreign markets. TAITRA boasts a well-coordinated trade promotion and information network of over 1,200 international marketing specialists stationed throughout its Taipei headquarters and 50 overseas offices worldwide. Together with its sister organizations, the Taiwan Trade Center (TTC) and the Taipei World Trade Center (TWTC), TAITRA has created a wealth of trade opportunities through effective promotion strategies.

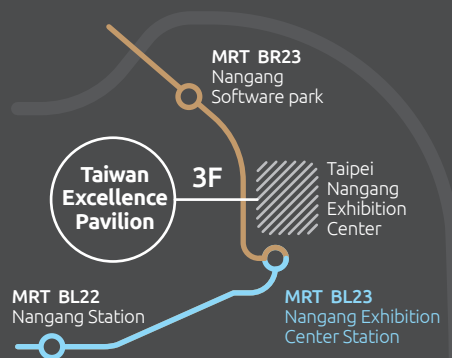


**TAIWAN
EXCELLENCE**

Taiwan Excellence Pavilion

Taiwan Excellence Pavilion showcases the country's best innovations across industries. Located on 3F of Nangang Exhibition Center. The Pavilion is home to Taiwan Excellence Award winning products. Visiting Taiwan Excellence Pavilion is a visual feast for eyes and a physical experience for the hands, combining technology with aesthetic design.

www.taiwanexcellence.org/en
www.taiwanexcellence.org/tw/pavilion



3F, Hall 1, Taipei Nangang Exhibition Center
 No.1, Jingmao 2nd Rd., Nangang District, Taipei City

Take Taipei MRT **Blue Line** or **Brown Line** to
 Taipei Nangang Exhibition Center Station

Free Admission

Mon - Fri 09:30-18:30 &
 Exhibition Days

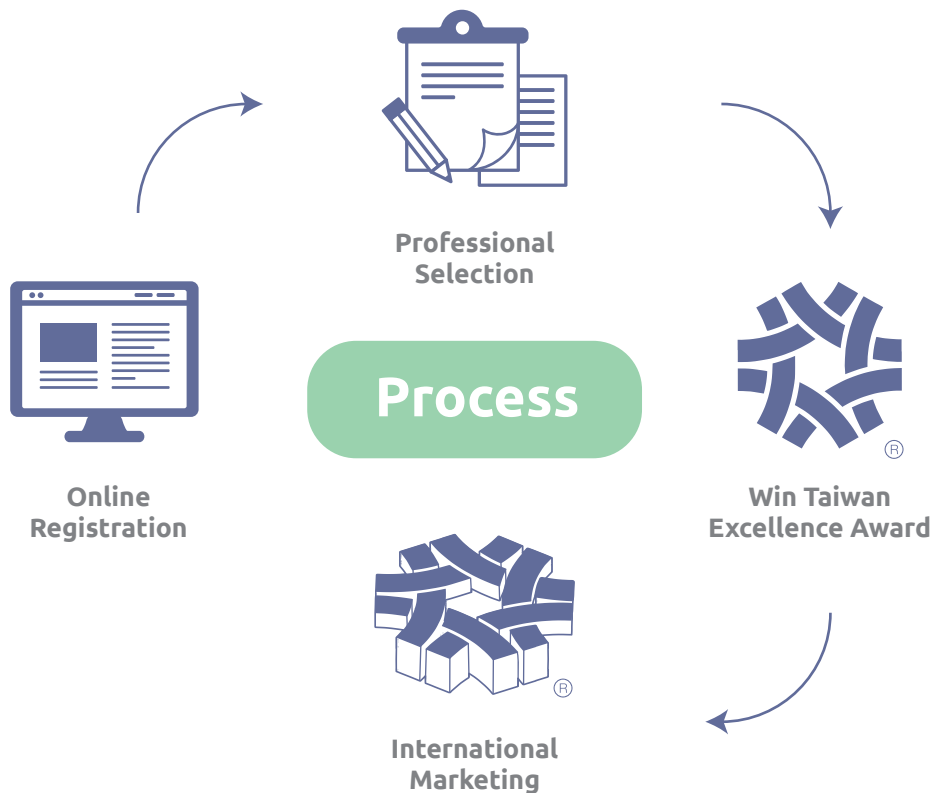


Taiwan Excellence



Taiwan Excellence Pavilion

What is Taiwan Excellence?



In order to encourage Taiwanese manufacturers to enhance their total capability and to incorporate innovation and added value into their products, the Ministry of Economic Affairs (MOEA) has launched a large scale groundbreaking and forward-looking national project, The Taiwan Industry Image Enhancement Project (IEP project). The government has entrusted the Taiwan External Trade Development Council (TAITRA) to carry out the project.

Under the scheme of work, the Taiwan Excellence selection has been implemented to select annually the most innovative products based on their excellence in criteria including research and development, design, quality, and international marketing. Taiwan Excellence Awards are given to products that stand out the selection and show competi-

tive "Innovative Values". All award winning products are entitled to apply the Taiwan Excellence mark for marketing and promotional purpose. Companies that win the award are proud to take advantage of the mark as it represents the highest honor of Taiwan national recognized and endorsed excellent products.

The IEP provides both B2B and B2C focused companies the perfect platform for value-added promotion through cross-platform media-links, O2O(online to offline), and a series of integrated marketing communication activities, which included exhibition marketing, experiential marketing, channel marketing, media relations, advertising, celebrity endorsement, brand agency fairs and digital marketing among other related activities.

Events Calendar Thailand



The Schedule of Taiwan Excellence Events in Thailand

06/20 - 06/23	Bangkok	Taiwan Excellence Pavilion at Manufacturing Expo 2018
08/30 - 09/01	Bangkok	Taiwan Excellence Pavilion at TAIWAN EXPO in Bangkok
11/21 - 11/24	Bangkok	Taiwan Excellence Pavilion at METALEX 2018



20		Advantech Co., Ltd.
22		Aplex Technology Inc.
23		Axiomtek Co., Ltd.
24		CoreTech System Co., Ltd. (Moldex3D)
24		ICP DAS Co., Ltd.
25		IEI Integration Corp.
26		Lanner Electronics Inc.
27		PLANET Technology Corp.

Contents

Power Tool



28



AirBoss Air Tools Co., Ltd.

29



Eclatorq Technology Co., Ltd.



29



Kilews Industrial Co., Ltd.

Machinery and Parts



31		Ching Hung Machinery and Electric Industrial Co., Ltd.
31		Da Jie Electricity Machinery Industrial Co., Ltd.
33	 <small>Motion Control and System Technology</small>	Hiwin Mikrosystem Corp.
33		Shin-Yain Industrial Co., Ltd.
34	 <small>TBIMOTION</small>	TBI Motion Technology Co., Ltd.
35		Techman Robot Inc.

Factory Energy Management Solution

SRP-EEM351

- Highly Stable and Reliable Centralized Monitoring and Management System
- Diversified Browsing via WebAccess Dashboard at Anytime Anywhere
- Centralized Management Platform with SCADA Framework



Product Information

www.advantech.com/
<https://buy.advantech.com/>

Modular Panel Computer

TPC-5000

Addressing Industry 4.0 needs, Advantech TPC-5000 industrial panel PC uses detachable and interchangeable display and computing modules to increase application flexibility, rapid customization and easy maintenance and upgrade.



Product Information

www.advantech.com/
<https://buy.advantech.com/>

OEE Solution

SRP-OEE200

- Use wireless I/O module connecting to machine tower light directly. Every status change is recorded by second.
- EasyUpload data of tower light to OEE Server through Wi-Fi connection
- Available to general machine with status light
- All data stored in SQL server is accessible to other IT system
- From the real-time dashboard, historical trends, downtime duration, production line analysis



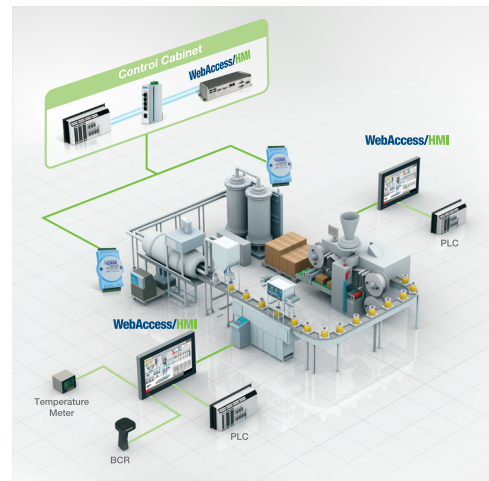
Product Information

www.advantech.com/
<https://buy.advantech.com/>

Process Visualization Solution

SRP-FPV220

- Collect equipment and environmental data from wireless shop-floor devices and automatically generate dashboard of production activities.
- The HTML5-based dashboard allows users to view real-time production information such as yield rates trends, equipment utilization and downtime alarms on any mobile device.
- Valuable information of field equipment and the environment can be integrated via open interfaces to optimize production plan and efficiency analysis.



Product Information

www.advantech.com/
<https://buy.advantech.com/>

Industrial Panel PC

ViPAC-821P

ViPAC-821P offers the IP66 front bezel is made of aluminum which is rugged, anti-corrosion and light weight; ViPAC-821P is equipped with embedded thermal dissipation technology which can be operated in high temperature and humid environments. Meanwhile, it supports 3G/4G LTE/BT/WiFi and embedded RFID/NFC sensor at front bezel, customers can change the material of front bezel to stainless steel; support high brightness up to 1000 nits and against glare, reflection as well as UV.



Product Information

 www.aplex.com.tw

 www.aplextec.com/en/about-contact.html

IP66/IP69K Stainless Steel Industrial Panel PC

ViTAM-821PH

ViTAM-821PH is a fully IP66/IP69K waterproof stainless steel panel PC. Based on SMART-TB Series extension modules with 13 choices, provide optional functions to meet customers' requirements.



Product Information

 www.aplex.com.tw

 www.aplextec.com/en/about-contact.html

IP66/IP69K-rated Stainless Steel Fanless PCT Panel Computer

GOT812L(H)-880

- 12.1" XGA TFT flat bezel LCD display
- Sunlight readable solution with 800 nits
- IP66/IP69K-rated (NEMA 4X) water/dust/corrosion-proof design
- Full stainless steel enclosure with type 316
- -20°C to +50°C wide operating temperature range
- Fanless design with Intel® Core™ i5 processor
- Optional Wi-Fi / 3G kit for wireless network connectivity
- 9~36 VDC wide range power input
- M12 type connectors for harsh environments



Product Information

 www.axiomtek.com
 shop.axiomtek.com.tw/tc/index.aspx

IP67 Fanless Rugged Embedded system

eBOX800-841-FL

- Fanless operation design with IP67-rated
- Intel® Atom™ processor E3845 quad-core onboard
- 4 antenna opening with water proof design for WLAN & WWAN usage
- Wide range operating temperature of -30°C to +60°C
- Supports wide range 9-36VDC power input
- Flexible I/O for customized designs and mission-critical projects



Product Information

 www.axiomtek.com
 shop.axiomtek.com.tw/tc/index.aspx

Moldex3D

Moldex3D R16

- Achieve High-quality Runner Mesh in Significantly Less Time
- Generate a Complete Mold Mesh Faster and Easier
- One Platform to Speed Up Simulation Workflow and Efficiency
- Enhanced In-mold Decoration(IMD) Simulation
- Fully Coupled Process Simulation to Satisfy Specific Needs for High-precision Plastic Parts
- New Simulation Capability for Polyurethane (PU) Chemical Foaming Process
- Extended Simulation Capability for Compression Molding of Sheet Molding Compound (SMC)



Product Information

🌐 www.moldex3d.com/ch/
🛒 www.moldex3d.com/ch/contact

WISE Monitoring IoT Kit

ICP DAS WISE-5231

- Runs on browsers, no extra software tool is required.
- No more programming, user-friendly web pages are provided for building the IoT Cloud system.
- Ready-to-run IoT Solutions: Includes an Intelligent Sensor Concentrator, a Temperature / Humidity module, an I/O module, and Microsoft Azure service.
- Completed Application Scenario: sensor data collection and Real-time automation control can be performed at the field-site, and the data can be transferred to Microsoft Azure IoT platform for analysis.
- Flexible integration with the Sensor and I/O module by Modbus protocol.
- Powerful automation control, data logger and alarm notification functions at field site.
- Seamless integration with Microsoft Azure IoT service without programming.



Product Information

🌐 www.icpdas.com
🛒 www.icpdas.com



IEI Integration
Corp.

Fanless Embedded Computer TANK-870-Q170

- 6th Gen Intel® Core™ processor platform with Intel® Q170 chipset and DDR4 memory
- Triple independent display with high resolution support
- Rich high-speed I/O interfaces on one side for easy installation
- On-board internal power connector for providing power to add-on cards
- Great flexibility for hardware expansion



Product Information

 www.ieiworld.com

 https://www.ieiworld.com/en/sales_inquiry_form/



IEI Integration
Corp.

Mobile Data Collector MODAT-532

- Stylish rugged design and ultra-light industrial Android mobile device
 - Octa-Core Cortex A53 64bit 1.7 GHz Processor
 - 5.3" display PDA
 - Optional
GSM 850/900/1800/1900
WCDMA 2100/1900/850/900
4G LTE
FDD (Band 1,2,3,7,8,20)
TDD (Band 38,39,40,41)
 - Micro USB port and microSD card slot (max. 32 GB) for maximum connectivity
 - Android 5.0 OS
 - 1D/2D imager scan engine
 - NFC (device to device communication, card reader).
- MODAT-532-2018-V10



Product Information

 www.ieiworld.com

 https://www.ieiworld.com/en/sales_inquiry_form/

High-performance IPC with Intel® 6th Gen Skylake Core™ i7/i5/i3 CPU

LEC-2580

The LEC-2580's processing prowess comes from Intel's Core™ i7-6600U, Core™ i5-6300U and Core™ i3-6100U processors. Its standout features include four RS-232/422/485 serial ports, four USB 3.0, two USB 2.0 ports and two HDMI ports, each supporting resolution up to 3840 x 2160 at 24Hz or 2560 x 1600 at 60Hz. For networking communications, the LEC-2580 offers six 10/100/1000 Mbps Ethernet ports while the LEC-2580P, a variant of the LEC-2580, comes with two 10/100/1000 Mbps Ethernet ports and four PoE ports for even greater flexibility.



Product Information

www.lannerinc.com

www.lannerinc.com/Contact-us

Wireless IoT Security Appliance

NCA-1010

NCA-1010 is Lanner's revolutionary ultra compact x86 networking system built with Intel® Bay Trail CPU (Atom™ E3815/E3825). The central processor comes with hardware-assisted security mechanisms including AES-NI, allowing only authorized software or data to run on NCA-1010. With built-in instruction commands, NCA-1010 helps manage and secure devices connected to local WiFi network, like a compact entry-level firewall or multi-service gateway. Despite its compact size, NCA-1010 delivers rich I/O connectivity and scalability. In terms of scalability, NCA-1010 comes with one HDMI port for high definition display, one console port for device network management, three LAN ports for network connections, two USB ports (one in USB 2.0 and another in USB 3.0 specifications) for external devices, and one antenna hole for signal reception. The rich I/O connectivity makes NCA-1010 a widely deployable system in small area network environments.



Product Information

www.lannerinc.com

www.lannerinc.com/Contact-us

4-Port Ultra PoE + 2-Port SFP L2+ Managed Ring Switch

IGS-5225-4UP1T2S

- IPv4/IPv6 Layer 3 Static Routing
- G.8032 ERPS ring supported
- Supports Modbus TCP/IP protocol for factory automation
- Redundant power design: Dual 12~48V DC/48~56V DC
- -40 to 75 degrees C operating temperature
- 4-port 60-watt IEEE 802.3bt PoE, up to 240-watt PoE budget

8G 802.3at PoE + 2G SFP L2+ Managed Ring Switch with LCD Touch Screen

WGS-5225-8P2SV

- 2.4-inch color LCD touch screen with management functions
- 8-port 10/100/1000BASE-T 802.3at PoE+ with 2-port 100/1000BASE-X SFP
- ERPS Ring Data Recovery time < 20ms
- IPv4/IPv6 Layer 3 static routing and Modbus TCP/IP Protocol
- 48~56V DC dual power design
- -20~70 degrees C operating temperature



Product Information

www.planet.com.tw

sales@planet.com.tw



Product Information

www.planet.com.tw

sales@planet.com.tw



AirBoss Air Tools
Co., Ltd.

1" Swing Hammer Air Impact Wrench - with Portable Handle AW-422GL

- Well designed for Industrial, automobile, motorbike assembling .
- Housing material made by magnesium alloy, durable than composite material.
- 15%~20% lighter weight design, better for operation.



Product Information

 www.twairboss.com/

 www.twairboss.com/



AirBoss Air Tools
Co., Ltd.

1/2" Air Impact Wrench - Pistol AB-1900P

- Well designed for Industrial, automobile, bike and motorbike assembling.
- Body material made by aluminum, durable than composite material. cover made by steel, patented core parts, suitable for AUTO repairing.
- Reverse and speed setting behind the tools
- Lighter weight design, better for operation.
- Excellent cost-performance ratio in same level of air wrench



Product Information

 www.twairboss.com/

 www.twairboss.com/

Digital Torque Wrench

DK3-135BN

- Powerful operation for Torque Setting, Unit Setting, Mode Setting, Data Storage, Data Clear, Data Output and Online Calibration.
- 9 pre-settable target torque value.
- While using and the LCD is not visible, the 12 LEDS would side perceptible to provide notice for torque value.



Product Information

 www.eclatorq.com

 www.eclatorq.com

Electric Screwdriver

SKD-B830LB

- electric screwdriver can connect with KL-CTDS to display tightening torque, output tightening torque, output tightening status, storage tightening torque and together with error proof functions.
- is able to prevent errors from tightening torque, tightening number of threads, and tightening time.
- can be connected to your PLC and integrated with your automation equipment and output assembly status instantly to your server or private could by ethernet or WIFI for traceability.



Product Information

 www.kilews.com

 www.kilews.com

KL-CTDS

KL-CTDS

- is able to display tightening torque, output tightening torque, output tightening status, storage tightening torque and together with error proof functions.
- is able to prevent errors from tightening torque, tightening number of threads, and tightening time.
- can be connected to your PLC and integrated with your automation equipment and output assembly status instantly to your server or private could by ethernet or WIFI for traceability.



Product Information

 www.kilews.com

 www.kilews.com

Torque Meter

KTM-150

- The torque meters are directly produced in Japan, authorized by Kilews Industrial Co., Ltd. ODM. Each product will be provided with an Adjustment Certificate and one year Warranty in normal using.
- Led can identify the test range of torque setting by needed user. If the result is not complying to torque range setting Light will be warred.
- USB connector is only used for data output : it is convenient for user to work with computer.
- Auto-zero can be selected and zero reset becomes unnecessary for user.
- Automatically test values about maximum, minimum and mean.



Product Information

 www.kilews.com

 www.kilews.com



Ching Hung
Machinery and
Electric Industrial Co., Ltd.



Da Jie Electricity
Machinery
Industrial Co., Ltd.

Intelligent Linear Motor Drive Wire Cut Edm

RV853L

With new design of interior and exterior, RV853L provide the cutting edge technologies of intelligent system and professional machining skills. The intelligent controller with the features of brand new intelligent machining system including monitoring the machining data, M to M networks and real time production management can assist the operator to achieve the expert operational mode and the manager to administrate the whole factory.

Automatic Electric Upsetter

DJ-VHAC160

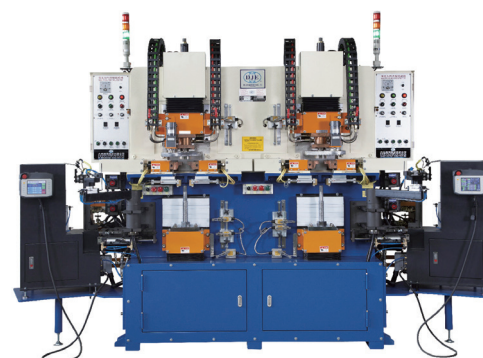
- Controllable: new operating interface
- Economic: 50% materials saved and 80% manpower saved.



Product Information

 www.chmer.com

 www.chmer.com



Product Information

 www.dajieco.com

 www.dajieco.com



Da Jie Electricity
Machinery
Industrial Co., Ltd.

Micro-computer Precision Control Spot Welding Machine

DJ-A500

- Micro-computer high function welding controller
- With automatic current circuit maintenance
- With power and voltage fluctuation compensation circuits.



Product Information

 www.dajieco.com

 www.dajieco.com

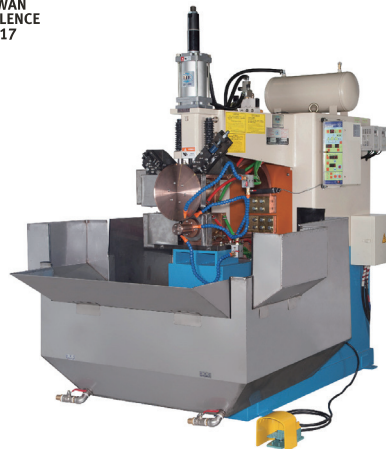


Da Jie Electricity
Machinery
Industrial Co., Ltd.

Next-generation Power-saving and High-efficiency Seam Welding Machine

DJ-C2500

Innovative high-efficiency·power-saving & safety control system with humanized interface.



Product Information

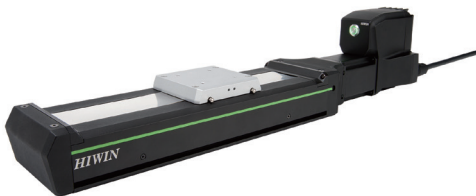
 www.dajieco.com

 www.dajieco.com

Intelligent Single-axis Robot Abi

iKM-KK086

- advanced actuation: Integration of motor/ encoder/drive/controller/network
- brilliant balance: For better reliability+ noise immunity
- infinite intelligence: Communication formats support widest possibilities



Product Information

www.hiwinmikro.com.tw/

www.hiwinmikro.com.tw/hiwintree/Product_Type.aspx?

Fner Fan Nut

FN-ER32-B

- Special design of fan blade shape facilitates dust removal to 99.8%
- Improve the evacuation of wooden dust, extend tool life and increase efficiency.
- Can be used for standard ER collet chucks, easy to operate.
- The special surface treatment of POWER GOOD nut enhances the clamping force.
- Decrease the wooden particle in the air to maintain a healthy working environment.
- Blanced to 25,000rpm at G2.5.



Product Information

www.syic.com

www.syic.com/e-catalog/index.html



Shin-Yain
Industrial
Co., Ltd.



TBI Motion
Technology
Co., Ltd.

Pner Collet Chunk System

16704

- Runout accuracy: within 3μ
- PN collet is well covered in PNER tool holder, improving overall runout accuracy and the machining stability.
- PNER improves the surface finish of workpiece, reduces the total processing time, extends the tool use life and prolongs the durability of machine spindle precision.
- Standard revolution: G2.5 25,000rpm, with an inspection report.



Product Information

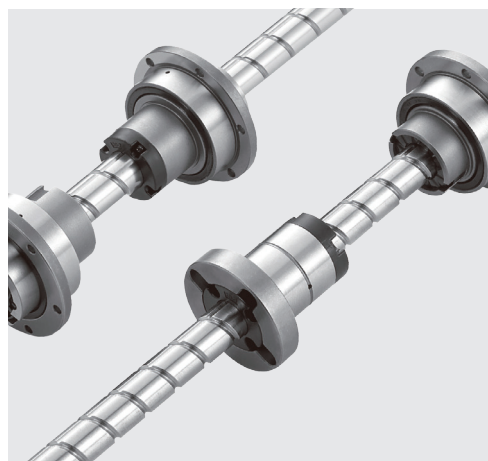
www.syic.com

www.syic.com/e-catalog/index.html

Rotary Series

Precision Ball Screw / Spline

- Straight, spiral, rotating three modes of motion
- Zero clearance, High rigidity
- High speed, High smoothness
- Noise reduction
- Plug and run, Compactness
- These components are dedicated for the horizontal multi-joint SCARA robotic arm applications



Product Information

www.tbimotion.com.tw/

<http://www.tbimotion.com.tw/product/category/54/1/en>

Single Axis Actuator

KP Series

- High Rigidity/U-Rail track design
- High Accuracy
- Less Occupation
- Easy Assembly



Product Information

 www.tbimotion.com.tw/

 www.tbimotion.com.tw/product/category/17/1/en

TM5

TM5

Smart: With our powerful built-in vision system, TM5 can see, think and work unitedly and smartly like human.

Simple: Users can use hand-guiding function to teach robot every pose and point in the task. All-graphic flow chart based HMI allows people to use robots as simple as smart phones.

Safe: TM5 complies with the ISO 10218 human-robot safety requirement.



Product Information

 tm-robot.com/index.php

 tm-robot.com/tw/www/TM5.php



Techman
Robot Inc.

TMflow

TMflow

In the past, the industrial interface was always complicated and difficult to understand. The entry threshold is high, often giving a great amount of frustration to learners. The TM-Flow has made each tool module graphical and via the tablet, computer or smartphone, you can start to program the robot's tasks. This makes you get started painlessly, learn quickly and build a real main-machine collaborative environment.



Product Information

 www.syic.com

 www.syic.com/e-catalog/index.html



**TAIWAN
EXCELLENCE**

Organized by



Bureau of Foreign Trade, MOEA



Taiwan External Trade Development Council (TAITRA)



Facebook



Taiwan Excellence

Taiwan Trade Center, Bangkok

Unit 1204, 12th Fl., GPF Witthayu Tower A, 93/1 Wireless Road,
Pathumwan, Bangkok 10330, Thailand

Tel. : +66 (2) 6514470

Fax : +66 (2) 6515923

E-mail : bangkok@taitra.co.th